

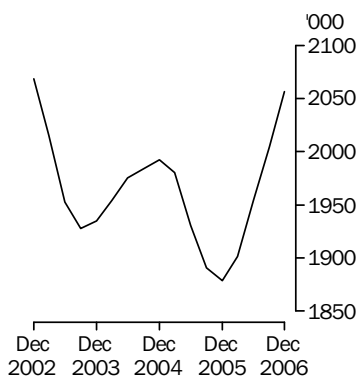
LIVESTOCK PRODUCTS

AUSTRALIA

EMBARGO: 11.30AM (CANBERRA TIME) WED 14 FEB 2007

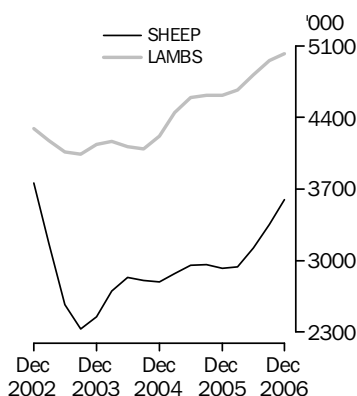
Cattle slaughtering

Excluding calves
Trend



Sheep and lamb slaughtering

Trend



KEY FIGURES

TREND ESTIMATES

	<i>Dec Qtr 2005</i>	<i>Sep Qtr 2006</i>	<i>Dec Qtr 2006</i>
	<i>'000</i>	<i>'000</i>	<i>'000</i>
Number slaughtered			
Cattle	1 878.7	2 004.7	2 056.7
Calves	207.6	222.1	241.8
Sheep	2 920.6	3 354.1	3 595.0
Lambs	4 616.5	4 961.8	5 025.8
Pigs	1 349.2	1 326.6	1 329.7
Chickens	109 351.4	111 846.2	112 577.0

	<i>Dec Qtr 2005</i>	<i>Sep Qtr 2006</i>	<i>Dec Qtr 2006</i>
	<i>tonnes</i>	<i>tonnes</i>	<i>tonnes</i>
Meat produced			
Beef	507 797	543 504	555 151
Veal	6 876	7 435	7 992
Mutton	60 156	69 036	73 307
Lamb	94 217	101 958	103 167
Pig meat	97 700	95 290	95 063
Chicken meat	191 923	200 074	200 058
Wool receivals	121 723	117 578	113 123

	<i>Sep Qtr 2005</i>	<i>Jun Qtr 2006</i>	<i>Sep Qtr 2006</i>
	<i>ML</i>	<i>ML</i>	<i>ML</i>
Whole milk intake by factories	2 539	2 602	2 656

KEY POINTS

TREND ESTIMATES

- In December quarter 2006, the trend estimate for the number of cattle slaughtered increased by 3% to 2.1 million.
- In December quarter 2006, the trend estimate for the number of sheep slaughtered increased by 7% to 3.6 million.
- In December quarter 2006, the trend estimate for the number of lambs slaughtered increased slightly to 5.0 million.
- In December quarter 2006, the trend estimate for pigs slaughtered remained steady at 1.3 million.

INQUIRIES

For further information about these and related statistics, contact the National Information and Referral Service on 1300 135 070 or Frank Costin on Hobart (03) 6222 5838.

NOTES

FORTHCOMING ISSUES

ISSUE (Quarter)

RELEASE DATE

March 2007

14 May 2007

June 2007

14 August 2007

September 2007

14 November 2007

.....

CHANGES IN THIS ISSUE

There are no changes in this issue.

FORTHCOMING CHANGES

There are no forthcoming changes.

.....

ABBREVIATIONS

ABS Australian Bureau of Statistics

ML megalitre

t tonne

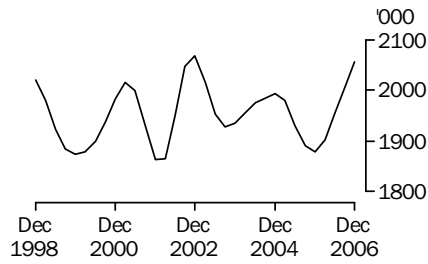
UHT ultra heat treated

Susan Linacre

Acting Australian Statistician

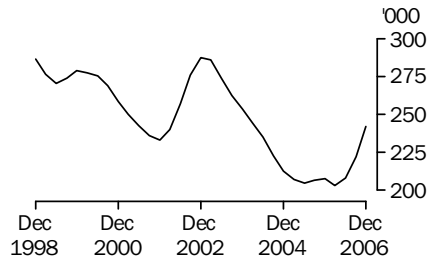
LIVESTOCK SLAUGHTERED TREND

CATTLE (EXCLUDING CALVES)



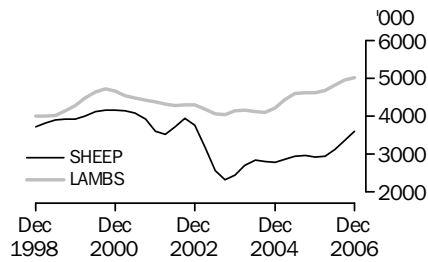
The trend estimate for the number of cattle slaughtered in December quarter 2006 increased by 3% to 2.1 million.

CALVES



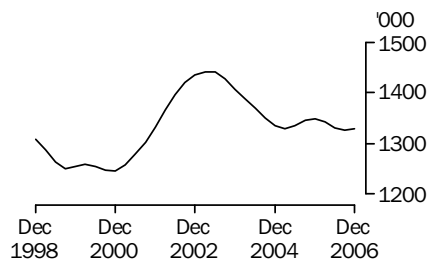
The trend estimate for the number of calves slaughtered in December quarter 2006 increased by 9% to 242,000.

SHEEP AND LAMBS



In December quarter 2006, the trend estimate for the number of sheep slaughtered increased by 7% to 3.6 million. The number of lambs slaughtered increased slightly to 5.0 million.

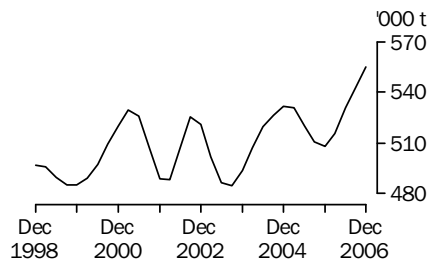
PIGS



In December quarter 2006, the trend estimate for the number of pigs slaughtered remained steady at 1.3 million.

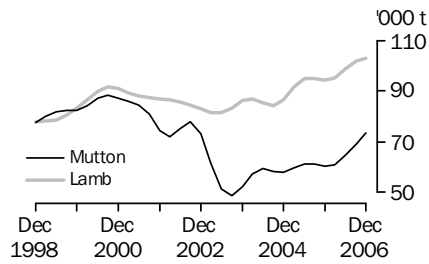
MEAT PRODUCTION TREND

BEEF



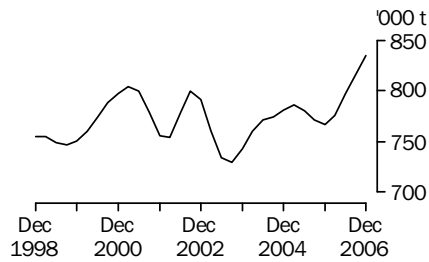
In December quarter 2006, the trend estimate for beef production increased by 2% to 555,000 tonnes.

MUTTON AND LAMB



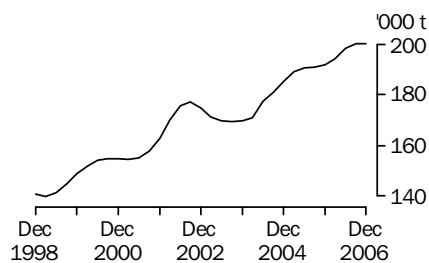
In December quarter 2006, the trend estimate for mutton production increased by 6% to 73,300 tonnes. The trend estimate for lamb production increased slightly to 103,000 tonnes.

TOTAL RED MEAT



The trend estimate for red meat production increased by 2% to 835,000 tonnes in December quarter 2006.

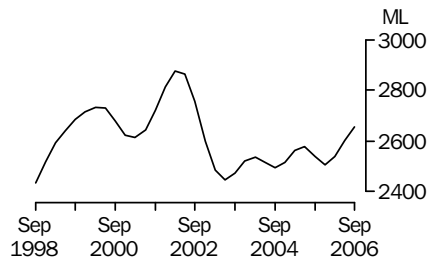
CHICKEN MEAT



The trend estimate for chicken meat production remained steady at 200,000 tonnes in December quarter 2006.

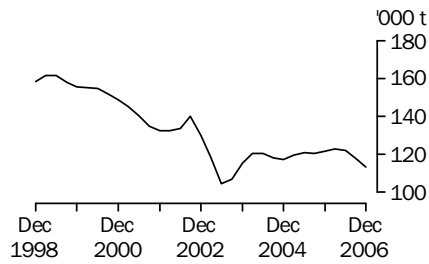
LIVESTOCK PRODUCTS TREND

WHOLE MILK INTAKE BY FACTORIES



The trend estimate for whole milk intake by factories in September quarter 2006 increased by 2% to 2.7 billion litres.

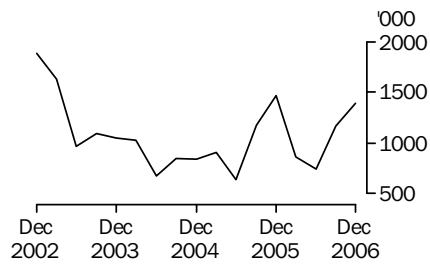
BROKERS AND DEALERS RECEIVALS OF TAXABLE WOOL



The trend estimate for wool receivals by brokers and dealers in December quarter 2006 decreased by 4% to 113,000 tonnes.

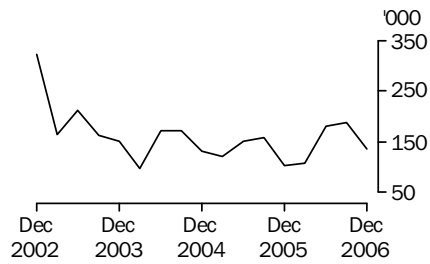
LIVESTOCK EXPORTS ORIGINAL

EXPORTS OF LIVE SHEEP



Live sheep exports rose by 19% to 1.4 million in December quarter 2006. Gross value rose by 17% for the quarter, up to \$97.8 million. Unit value fell by 2% to \$70.40.

EXPORTS OF LIVE CATTLE



In December quarter 2006, live cattle exports fell by 27% to 136,000. Gross value fell by 26% for the quarter, down to \$94.2 million. Unit value rose by 2% to \$692.44.

LIST OF TABLES AND GRAPHS

page

OVERVIEW

1	Livestock slaughtered, Australia	9
2	Livestock products, Australia	10

LIVESTOCK SLAUGHTERINGS

3	Number of livestock slaughtered, bulls, bullocks and steers, by state	11
4	Number of livestock slaughtered, cows and heifers, by state	12
5	Number of livestock slaughtered, total cattle (excluding calves), by state	13
6	Number of livestock slaughtered, calves, by state	14
7	Number of livestock slaughtered, sheep, by state	15
8	Number of livestock slaughtered, lambs, by state	16
9	Number of livestock slaughtered, pigs, by state	17
10	Number of chickens slaughtered, by state	18
11	Number of livestock slaughtered, financial year, by state	19

MEAT PRODUCED

12	Red meat produced, beef, by state	20
13	Red meat produced, veal, by state	21
14	Red meat produced, mutton, by state	22
15	Red meat produced, lamb, by state	23
16	Red meat produced, pig meat, by state	24
17	Total red meat produced, by state	25
18	Chicken meat produced, by state	26
19	Meat produced, financial year, by state	27

EXPORTS OF MEAT AND LIVE ANIMALS

20	Exports of fresh, frozen and processed meat, Australia	28
21	Exports of live sheep and cattle, Australia	29

LIVESTOCK PRODUCTS

22	Whole milk intake by factories, by state	30
23	Market milk sales by factories, by state	31
24	Brokers and dealers receivals of taxable wool, by state	32
25	Livestock products, financial year, by state	33

LIVESTOCK SLAUGHTERED, Australia(a): All Series

Quarter	Bulls, bullocks and steers	Cows and heifers	Cattle (excluding calves)	Calves	Sheep	Lambs	Pigs	Chickens
	'000	'000	'000	'000	'000	'000	'000	'000
ORIGINAL								
2005								
September	1 102.8	772.0	1 874.7	376.0	2 403.0	4 333.0	1 349.1	108 849.6
December	1 045.7	761.2	1 806.9	145.0	3 150.8	4 716.6	1 344.6	111 539.9
2006								
March	1 039.1	844.5	1 883.6	105.5	3 417.8	4 711.9	1 294.9	109 826.2
June	1 050.8	964.0	2 014.8	194.7	2 858.1	4 904.1	1 381.5	107 648.8
September	1 145.4	850.6	1 996.0	386.7	2 736.8	4 686.8	1 329.2	112 282.7
December	1 162.6	928.4	2 091.1	182.0	4 100.7	5 180.6	1 314.2	115 061.6
SEASONALLY ADJUSTED								
2005								
September	1 063.7	779.5	1 843.3	204.4	2 901.0	4 662.0	1 341.3	109 625.9
December	1 020.4	805.5	1 825.8	207.7	2 849.4	4 550.4	1 367.1	108 505.2
2006								
March	1 098.6	886.0	1 984.6	208.7	3 016.9	4 649.0	1 331.9	109 705.4
June	1 059.4	865.9	1 925.3	202.7	3 054.7	4 804.0	1 330.4	110 086.3
September	1 103.2	861.0	1 964.2	211.1	3 320.8	5 040.9	1 321.8	112 981.9
December	1 136.5	982.3	2 118.9	258.7	3 703.1	5 004.9	1 335.2	111 954.4
TREND								
2005								
September	1 071.2	819.7	1 890.9	206.7	2 960.0	4 620.6	1 345.8	108 985.5
December	1 055.5	823.3	1 878.7	207.6	2 920.6	4 616.5	1 349.2	109 351.4
2006								
March	1 058.7	842.8	1 901.5	203.3	2 941.4	4 667.3	1 341.8	109 488.2
June	1 081.7	872.5	1 954.1	208.1	3 121.6	4 819.9	1 330.7	110 705.8
September	1 103.7	901.1	2 004.7	222.1	3 354.1	4 961.8	1 326.6	111 846.2
December	1 120.1	936.7	2 056.7	241.8	3 595.0	5 025.8	1 329.7	112 577.0

(a) For more information refer to paragraphs 5, and 7 to 9 of the Explanatory Notes.

LIVESTOCK PRODUCTS, Australia(a): All Series

Quarter	RED MEAT						Chicken meat tonnes	Whole milk intake by factories ML	Brokers and dealers receipts of taxable wool tonnes
	Beef tonnes	Veal tonnes	Mutton tonnes	Lamb tonnes	Pig meat tonnes	Total red meat tonnes			
ORIGINAL									
2005									
September	504 729	10 024	49 322	88 187	99 727	751 988	188 782	2 388	129 320
December	495 343	5 679	68 032	94 236	95 607	758 896	190 998	3 382	135 655
2006									
March	510 562	4 924	69 585	97 232	92 078	774 381	196 658	2 396	124 574
June	538 887	6 924	56 852	102 183	101 451	806 297	196 175	1 927	97 177
September	549 188	10 553	57 470	96 061	96 384	809 655	198 358	2 504	123 159
December	560 541	6 738	85 508	104 276	92 769	849 833	206 225	nya	131 950
SEASONALLY ADJUSTED									
2005									
September	496 609	6 913	59 365	95 332	98 034	756 253	189 844	2 517	118 536
December	498 496	7 004	59 242	92 213	98 374	755 329	185 595	2 485	117 337
2006									
March	532 666	6 622	61 946	95 328	96 303	792 865	199 450	2 507	126 815
June	522 549	6 929	63 150	98 854	96 186	787 668	197 865	2 647	125 073
September	540 048	7 318	69 573	103 825	94 767	815 531	199 792	2 647	113 483
December	564 812	8 238	74 304	102 210	95 409	844 973	200 441	nya	113 617
TREND									
2005									
September	510 837	6 941	61 126	94 975	97 741	771 620	190 921	2 539	120 627
December	507 797	6 876	60 156	94 217	97 700	766 746	191 923	2 507	121 723
2006									
March	515 639	6 757	60 861	95 402	96 925	775 584	194 317	2 538	123 036
June	530 658	6 978	64 656	99 005	95 892	797 189	198 425	2 602	121 979
September	543 504	7 435	69 036	101 958	95 290	817 223	200 074	2 656	117 578
December	555 151	7 992	73 307	103 167	95 063	834 680	200 058	nya	113 123

nya not yet available

(a) For more information refer to paragraphs 5 to 9 and 13 to 15 of the Explanatory Notes.

NUMBER OF LIVESTOCK SLAUGHTERED(a), Bulls, bullocks and steers: All Series

Quarter	New South Wales	Victoria	Queensland	South Australia	Western Australia	Tasmania	Australia
	'000	'000	'000	'000	'000	'000	'000
ORIGINAL							
2005							
September	224.4	124.1	657.2	34.7	42.3	19.7	1 102.8
December	218.1	157.5	546.9	48.1	53.3	21.5	1 045.7
2006							
March	238.4	158.6	519.1	54.9	46.7	21.0	1 039.1
June	234.3	137.5	575.7	39.1	45.0	19.0	1 050.8
September	230.8	139.1	673.0	37.2	47.2	18.0	1 145.4
December	230.4	183.9	618.3	50.0	53.8	26.0	1 162.6
SEASONALLY ADJUSTED							
2005							
September	227.9	142.8	576.4	44.0	46.1	23.3	1 063.7
December	222.3	147.9	535.5	42.3	44.7	21.3	1 020.4
2006							
March	230.6	146.4	621.9	50.0	47.1	18.6	1 098.6
June	234.0	139.9	574.0	40.1	50.2	18.6	1 059.4
September	234.3	160.2	589.7	47.3	51.2	21.4	1 103.2
December	235.4	172.5	605.5	43.8	45.4	25.5	1 136.5
TREND							
2005							
September	230.0	145.5	576.2	45.5	48.0	23.2	1 071.2
December	227.0	144.6	573.4	44.8	45.8	20.8	1 055.5
2006							
March	228.5	144.0	579.8	44.7	47.2	19.0	1 058.7
June	232.6	148.3	590.2	44.9	49.3	19.5	1 081.7
September	234.9	157.5	594.3	44.6	49.3	21.6	1 103.7
December	235.6	168.1	594.2	44.2	48.0	24.1	1 120.1

(a) For more information refer to paragraphs 4, 5 and 7 of the Explanatory Notes.

NUMBER OF LIVESTOCK SLAUGHTERED(a), Cows and heifers: All Series

Quarter	New South Wales	Victoria	Queensland	South Australia	Western Australia	Tasmania	Australia
	'000	'000	'000	'000	'000	'000	'000
ORIGINAL							
2005							
September	136.9	188.4	332.6	25.6	63.8	23.7	772.0
December	162.8	198.6	272.3	40.9	61.1	24.4	761.2
2006							
March	170.9	208.6	325.2	44.3	61.5	32.9	844.5
June	204.4	208.1	417.9	37.3	60.1	35.1	964.0
September	167.1	192.9	372.6	30.8	59.0	27.2	850.6
December	213.9	247.0	330.1	46.1	61.3	29.0	928.4
SEASONALLY ADJUSTED							
2005							
September	141.3	198.1	308.8	29.6	65.0	27.1	779.5
December	161.7	196.6	316.7	40.0	62.1	27.2	805.5
2006							
March	177.7	209.1	381.5	41.1	58.5	29.5	886.0
June	192.4	199.5	344.4	35.9	61.1	31.7	865.9
September	172.5	203.4	346.8	35.9	60.1	30.8	861.0
December	212.2	244.4	384.4	45.0	62.6	32.5	982.3
TREND							
2005							
September	166.3	208.6	324.0	41.6	66.7	25.6	819.7
December	167.4	201.9	333.7	40.8	62.2	27.9	823.3
2006							
March	173.6	198.0	347.3	38.6	59.7	29.6	842.8
June	182.5	204.2	356.3	37.6	60.0	30.7	872.5
September	190.4	214.6	360.4	38.6	60.9	31.6	901.1
December	199.1	228.2	365.9	40.9	61.9	32.2	936.7

(a) For more information refer to paragraphs 4, 5 and 7 of the Explanatory Notes.

NUMBER OF LIVESTOCK SLAUGHTERED(a), Total cattle (excluding calves): All Series

Quarter	New South Wales	Victoria	Queensland	South Australia	Western Australia	Tasmania	Australia
	'000	'000	'000	'000	'000	'000	'000
ORIGINAL							
2005							
September	361.3	312.5	989.8	60.3	106.1	43.4	1 874.7
December	380.9	356.1	819.2	89.0	114.4	45.9	1 806.9
2006							
March	409.4	367.2	844.3	99.2	108.3	53.9	1 883.6
June	438.7	345.5	993.6	76.3	105.2	54.1	2 014.8
September	397.8	332.0	1 045.5	68.0	106.2	45.1	1 996.0
December	444.2	430.9	948.4	96.1	115.1	55.0	2 091.1
SEASONALLY ADJUSTED							
2005							
September	369.3	340.8	885.2	73.6	111.1	50.5	1 843.3
December	384.0	344.5	852.2	82.2	106.9	48.4	1 825.8
2006							
March	408.3	355.5	1 003.4	91.1	105.5	48.1	1 984.6
June	426.4	339.4	918.4	75.9	111.3	50.3	1 925.3
September	406.8	363.6	936.5	83.3	111.3	52.2	1 964.2
December	447.6	416.9	990.0	88.8	108.0	58.0	2 118.9
TREND							
2005							
September	396.2	354.1	900.1	87.1	114.6	48.8	1 890.9
December	394.4	346.5	907.2	85.6	108.0	48.7	1 878.7
2006							
March	402.0	342.0	927.2	83.3	106.9	48.7	1 901.5
June	415.2	352.5	946.5	82.6	109.3	50.2	1 954.1
September	425.3	372.0	954.7	83.2	110.2	53.2	2 004.7
December	434.7	396.2	960.1	85.1	109.9	56.3	2 056.7

(a) For more information refer to paragraphs 4, 5 and 7 of the Explanatory Notes.

NUMBER OF LIVESTOCK SLAUGHTERED(a), Calves: All Series

Quarter	New South Wales	Victoria	Queensland	South Australia	Western Australia	Tasmania	Australia
	'000	'000	'000	'000	'000	'000	'000
ORIGINAL							
2005							
September	50.5	277.2	16.5	1.3	1.1	29.2	376.0
December	48.0	73.7	14.0	0.9	1.0	7.3	145.0
2006							
March	50.8	36.9	14.9	1.1	0.7	0.9	105.5
June	55.3	117.3	17.0	1.2	0.9	2.8	194.7
September	54.6	284.6	16.8	1.3	1.1	28.1	386.7
December	58.9	102.3	11.7	0.9	0.7	7.2	182.0
SEASONALLY ADJUSTED							
2005							
September	51.4	125.2	15.8	1.2	1.0	10.0	204.4
December	51.1	118.8	15.8	1.2	1.0	10.1	207.7
2006							
March	50.7	164.0	15.1	1.1	0.8	11.1	208.7
June	51.4	124.0	15.6	0.9	1.0	9.9	202.7
September	55.6	129.1	16.0	1.2	1.1	9.7	211.1
December	62.6	163.9	13.3	1.2	0.7	9.9	258.7
TREND							
2005							
September	51.3	126.6	16.9	1.2	1.0	10.2	206.7
December	51.0	133.7	15.7	1.2	0.9	10.3	207.6
2006							
March	50.6	136.7	15.4	1.1	0.9	10.4	203.3
June	52.6	137.4	15.5	1.1	0.9	10.2	208.1
September	56.3	140.2	15.1	1.1	0.9	9.9	222.1
December	60.6	146.0	14.3	1.2	0.9	9.7	241.8

(a) For more information refer to paragraphs 4, 5 and 7 of the Explanatory Notes.

NUMBER OF LIVESTOCK SLAUGHTERED(a), Sheep: All Series

Quarter	New South Wales	Victoria	Queensland	South Australia	Western Australia	Tasmania	Australia
	'000	'000	'000	'000	'000	'000	'000
ORIGINAL							
2005							
September	697.6	791.2	208.0	218.2	442.1	45.8	2 403.0
December	933.9	1 007.1	233.3	337.9	576.7	61.9	3 150.8
2006							
March	1 081.0	1 073.4	252.6	302.8	609.9	98.1	3 417.8
June	995.0	850.3	246.0	203.0	491.9	71.9	2 858.1
September	803.4	826.5	206.9	287.3	560.9	51.9	2 736.8
December	1 215.5	1 262.7	244.1	440.0	805.3	133.1	4 100.7
SEASONALLY ADJUSTED							
2005							
September	862.5	970.0	218.6	252.0	524.3	75.2	2 901.0
December	874.7	910.7	229.1	280.0	505.2	57.9	2 849.4
2006							
March	993.5	935.4	248.7	269.3	510.6	73.5	3 016.9
June	956.0	910.8	242.3	252.5	596.3	72.9	3 054.7
September	1 003.4	1 016.8	218.2	333.2	668.9	85.8	3 320.8
December	1 135.4	1 142.3	238.8	362.9	705.6	123.1	3 703.1
TREND							
2005							
September	887.7	974.1	228.6	268.3	528.9	71.3	2 960.0
December	907.5	941.6	234.2	265.0	509.9	67.1	2 920.6
2006							
March	935.7	909.8	238.5	264.7	529.1	66.1	2 941.4
June	981.9	948.8	237.7	283.1	590.2	76.6	3 121.6
September	1 032.4	1 021.1	232.5	316.4	655.7	93.2	3 354.1
December	1 087.2	1 102.6	228.9	355.9	711.0	109.8	3 595.0

(a) For more information refer to paragraphs 4, 5 and 7 of the Explanatory Notes.

NUMBER OF LIVESTOCK SLAUGHTERED(a), Lambs: All Series

Quarter	New South Wales	Victoria	Queensland	South Australia	Western Australia	Tasmania	Australia
	'000	'000	'000	'000	'000	'000	'000
ORIGINAL							
2005							
September	966.9	1 755.0	70.2	694.2	705.4	141.3	4 333.0
December	1 047.5	1 947.4	65.4	843.5	695.8	117.1	4 716.6
2006							
March	1 068.8	1 904.9	64.9	876.2	675.6	121.4	4 711.9
June	1 144.2	2 006.1	83.1	817.2	721.6	131.9	4 904.1
September	1 119.2	2 089.0	63.5	724.2	559.5	131.4	4 686.8
December	1 145.2	2 454.7	75.9	840.5	548.3	115.9	5 180.6
SEASONALLY ADJUSTED							
2005							
September	1 062.8	1 846.4	65.9	863.7	752.9	135.6	4 662.0
December	1 014.9	1 834.3	69.4	805.6	661.4	126.6	4 550.4
2006							
March	1 024.7	1 919.0	72.7	799.1	696.8	126.7	4 649.0
June	1 126.9	2 013.6	75.2	776.5	692.6	122.7	4 804.0
September	1 229.5	2 199.1	60.1	901.4	596.1	126.1	5 040.9
December	1 111.1	2 316.3	80.3	801.5	523.2	125.4	5 004.9
TREND							
2005							
September	1 047.5	1 834.2	68.3	858.5	695.2	131.4	4 620.6
December	1 028.3	1 857.1	70.3	819.8	707.6	130.3	4 616.5
2006							
March	1 058.1	1 915.9	71.0	797.9	695.6	125.9	4 667.3
June	1 120.6	2 039.3	70.6	815.3	659.1	124.5	4 819.9
September	1 163.6	2 178.4	70.6	834.5	606.8	124.9	4 961.8
December	1 168.2	2 284.5	72.4	841.2	549.3	125.3	5 025.8

(a) For more information refer to paragraphs 4, 5 and 7 of the Explanatory Notes.

NUMBER OF LIVESTOCK SLAUGHTERED(a), Pigs: All Series

	New South Wales	Victoria	Queensland	South Australia	Western Australia	Tasmania	Australia
Quarter	'000	'000	'000	'000	'000	'000	'000
ORIGINAL							
2005							
September	424.6	181.8	325.1	250.5	155.0	10.4	1 349.1
December	421.6	192.2	323.3	251.4	143.4	11.1	1 344.6
2006							
March	374.1	195.3	319.8	246.9	147.1	10.0	1 294.9
June	412.9	208.5	324.6	270.0	153.7	10.3	1 381.5
September	396.7	203.0	320.8	261.5	135.1	10.7	1 329.2
December	405.4	196.0	303.0	256.7	140.5	10.9	1 314.2
SEASONALLY ADJUSTED							
2005							
September	420.5	180.8	321.1	252.6	152.7	10.3	1 341.3
December	422.1	194.7	329.2	261.4	151.2	10.3	1 367.1
2006							
March	393.6	201.6	326.1	247.2	148.6	10.6	1 331.9
June	396.8	200.7	317.1	258.1	146.8	10.7	1 330.4
September	392.7	201.8	316.7	263.7	133.2	10.6	1 321.8
December	405.8	199.0	308.5	266.0	148.2	10.1	1 335.2
TREND							
2005							
September	417.2	188.9	324.4	248.6	154.0	10.5	1 345.8
December	413.7	192.0	325.7	254.3	151.6	10.4	1 349.2
2006							
March	402.9	198.6	324.8	255.7	147.6	10.5	1 341.8
June	395.6	201.6	320.0	257.0	143.8	10.6	1 330.7
September	396.2	201.0	314.5	261.7	141.6	10.5	1 326.6
December	401.4	199.9	309.9	267.2	141.6	10.3	1 329.7

(a) For more information refer to paragraphs 4, 5 and 7 of the Explanatory Notes.

NUMBER OF CHICKENS SLAUGHTERED(a): All Series

Quarter	New South Wales	Victoria	Queensland	South Australia	Western Australia	Australia
	'000	'000	'000	'000	'000	'000
ORIGINAL						
2005						
September	37 957.7	29 610.1	21 212.8	np	np	108 849.6
December	37 118.0	31 130.2	22 124.3	np	np	111 539.9
2006						
March	37 314.4	30 892.3	20 744.4	np	np	109 826.2
June	37 042.3	30 687.6	18 641.7	np	np	107 648.8
September	37 198.0	31 713.9	21 416.9	np	np	112 282.7
December	37 672.9	32 323.5	23 123.2	np	np	115 061.6
SEASONALLY ADJUSTED						
2005						
September	37 861.5	30 121.7	21 365.8	np	np	109 625.9
December	36 687.9	30 386.3	20 892.2	np	np	108 505.2
2006						
March	37 449.1	30 725.2	20 575.1	np	np	109 705.4
June	37 463.7	31 106.9	19 877.7	np	np	110 086.3
September	37 060.4	32 224.3	21 529.6	np	np	112 981.9
December	37 271.2	31 587.4	21 809.6	np	np	111 954.4
TREND						
2005						
September	36 850.8	30 578.3	21 351.8	np	np	108 985.5
December	37 416.3	30 405.6	20 940.5	np	np	109 351.4
2006						
March	37 285.5	30 698.9	20 413.9	np	np	109 488.2
June	37 280.8	31 298.6	20 568.0	np	np	110 705.8
September	37 281.2	31 708.4	21 093.3	np	np	111 846.2
December	37 164.4	31 949.1	21 728.4	np	np	112 577.0

np not available for publication but included in totals where applicable, unless otherwise indicated

(a) For more information refer to paragraphs 8 and 9 of the Explanatory Notes.

NUMBER OF LIVESTOCK SLAUGHTERED (a): Original

Financial year	New South Wales '000	Victoria '000	Queensland '000	South Australia '000	Western Australia '000	Tasmania '000	Australia '000
BULLS, BULLOCKS AND STEERS							
2003-04	794.0	613.5	2 049.9	178.6	200.4	98.3	3 935.7
2004-05	925.8	600.2	2 330.6	191.1	228.7	109.2	4 386.9
2005-06	915.3	577.7	2 299.0	176.8	187.4	81.1	4 238.5
COWS AND HEIFERS							
2003-04	822.2	943.1	1 514.4	164.4	262.5	106.5	3 817.2
2004-05	774.6	915.5	1 359.8	168.0	281.8	94.9	3 598.7
2005-06	675.0	803.6	1 347.9	148.0	246.6	116.2	3 341.6
CATTLE (excluding calves)							
2003-04	1 616.1	1 556.6	3 564.2	342.9	462.9	204.7	7 752.9
2004-05	1 700.4	1 515.7	3 690.5	359.1	510.5	204.1	7 985.6
2005-06	1 590.3	1 381.3	3 646.9	324.8	434.0	197.3	7 580.1
CALVES							
2003-04	221.9	659.2	84.7	7.2	4.7	47.3	1 025.8
2004-05	201.2	539.0	73.3	5.3	4.3	44.1	867.9
2005-06	204.6	505.2	62.3	4.4	3.7	40.2	821.2
SHEEP							
2003-04	3 310.0	3 078.9	892.8	947.5	1 845.4	346.3	10 420.7
2004-05	3 548.4	3 465.4	918.9	979.1	2 205.2	325.6	11 442.6
2005-06	3 707.5	3 722.0	940.0	1 061.9	2 120.6	277.7	11 829.7
LAMBS							
2003-04	4 047.4	6 471.4	261.5	2 970.6	2 391.8	419.2	16 561.8
2004-05	4 110.4	6 787.1	287.2	3 236.2	2 466.7	442.9	17 330.6
2005-06	4 227.3	7 613.5	283.6	3 231.2	2 798.4	511.6	18 665.6
PIGS							
2003-04	1 751.1	973.1	1 318.1	820.9	674.4	44.2	5 591.2
2004-05	1 614.6	847.3	1 285.4	894.8	647.0	45.6	5 342.5
2005-06	1 633.1	777.8	1 292.9	1 018.9	599.2	41.8	5 370.1
CHICKENS							
2003-04	149 358.7	120 345.9	77 472.0	np	np	np	423 742.0
2004-05	147 973.2	124 726.5	84 086.2	np	np	np	437 640.9
2005-06	149 432.5	122 320.1	82 723.2	np	np	np	437 864.5

np not available for publication but included in totals where applicable, unless otherwise indicated

(a) For more information refer to paragraphs 4, 5 and 7 to 9 of the Explanatory Notes.

RED MEAT PRODUCED(a), Beef: All Series

<i>Quarter</i>	<i>New South Wales</i> tonnes	<i>Victoria</i> tonnes	<i>Queensland</i> tonnes	<i>South Australia</i> tonnes	<i>Western Australia</i> tonnes	<i>Tasmania</i> tonnes	<i>Australia</i> tonnes
ORIGINAL							
2005							
September	92 934	74 588	283 425	15 005	26 452	12 029	504 729
December	100 107	86 952	241 303	23 195	30 467	13 037	495 343
2006							
March	107 390	88 473	244 613	25 933	28 829	15 041	510 562
June	110 770	81 297	284 858	19 413	27 570	14 699	538 887
September	105 667	79 103	306 129	17 829	27 843	12 348	549 188
December	114 184	102 841	273 353	24 906	29 466	15 528	560 541
SEASONALLY ADJUSTED							
2005							
September	96 266	81 543	253 012	19 109	28 182	14 559	496 609
December	99 943	83 736	251 179	21 075	27 578	13 331	498 496
2006							
March	105 532	84 213	287 413	23 472	27 684	13 249	532 666
June	109 078	81 492	266 731	19 198	30 107	13 890	522 549
September	109 484	86 695	273 172	22 832	29 604	14 882	540 048
December	114 033	98 895	284 892	22 556	26 806	15 894	564 812
TREND							
2005							
September	101 245	85 105	258 470	21 409	28 792	13 892	510 837
December	100 587	83 243	262 353	21 083	27 790	13 617	507 797
2006							
March	103 864	81 961	269 113	21 224	28 370	13 447	515 639
June	108 222	84 237	274 370	21 615	29 114	13 952	530 658
September	110 872	88 631	276 570	21 814	28 934	14 850	543 504
December	112 831	93 943	278 164	22 264	28 131	15 649	555 151

(a) For more information refer to paragraphs 4 to 7 of the Explanatory Notes.

RED MEAT PRODUCED(a), Veal: All Series

Quarter	New South Wales	Victoria	Queensland	South Australia	Western Australia	Tasmania	Australia
	tonnes	tonnes	tonnes	tonnes	tonnes	tonnes	tonnes
ORIGINAL							
2005							
September	3 243	5 276	802	42	79	570	10 024
December	3 145	1 555	720	33	65	150	5 679
2006							
March	3 291	836	678	36	46	25	4 924
June	3 609	2 344	795	38	60	65	6 924
September	3 561	5 615	703	41	77	544	10 553
December	3 814	2 171	511	33	50	147	6 738
SEASONALLY ADJUSTED							
2005							
September	3 343	2 486	776	40	68	201	6 913
December	3 331	2 384	800	39	65	203	7 004
2006							
March	3 249	3 183	698	37	52	205	6 622
June	3 367	2 418	726	34	63	207	6 929
September	3 673	2 659	679	39	67	193	7 318
December	4 021	3 301	569	39	50	196	8 238
TREND							
2005							
September	3 328	2 528	815	40	64	207	6 941
December	3 309	2 619	770	38	62	205	6 876
2006							
March	3 287	2 680	736	36	60	203	6 757
June	3 427	2 720	705	36	60	202	6 978
September	3 671	2 818	657	37	60	198	7 435
December	3 940	2 971	608	39	58	194	7 992

(a) For more information refer to paragraphs 4 to 7 of the Explanatory Notes.

RED MEAT PRODUCED(a), Mutton: All Series

Quarter	New South Wales	Victoria	Queensland	South Australia	Western Australia	Tasmania	Australia
	tonnes	tonnes	tonnes	tonnes	tonnes	tonnes	tonnes
ORIGINAL							
2005							
September	14 723	15 022	4 310	4 845	9 515	907	49 322
December	21 115	20 118	5 048	7 671	12 845	1 235	68 032
2006							
March	22 770	19 999	5 055	6 861	13 042	1 858	69 585
June	20 187	15 424	4 689	4 722	10 537	1 293	56 852
September	17 826	15 664	4 244	6 910	11 818	1 009	57 470
December	26 352	24 339	5 193	10 322	16 721	2 580	85 508
SEASONALLY ADJUSTED							
2005							
September	18 189	18 520	4 509	5 568	11 177	1 502	59 365
December	18 924	17 379	4 767	6 231	11 122	1 144	59 242
2006							
March	20 954	17 400	5 065	6 150	11 012	1 393	61 946
June	20 327	17 428	4 752	6 013	12 956	1 318	63 150
September	22 264	19 406	4 447	7 982	13 957	1 681	69 573
December	23 523	21 024	4 887	8 356	14 475	2 358	74 304
TREND							
2005							
September	18 991	18 877	4 665	6 023	11 171	1 431	61 126
December	19 260	17 889	4 804	5 924	11 088	1 317	60 156
2006							
March	19 983	17 170	4 846	6 069	11 564	1 247	60 861
June	21 090	17 978	4 775	6 662	12 653	1 443	64 656
September	22 129	19 253	4 685	7 477	13 761	1 776	69 036
December	23 132	20 609	4 670	8 350	14 582	2 093	73 307

(a) For more information refer to paragraphs 4 to 7 of the Explanatory Notes.

Quarter	New South Wales	Victoria	Queensland	South Australia	Western Australia	Tasmania	Australia
	tonnes	tonnes	tonnes	tonnes	tonnes	tonnes	tonnes
ORIGINAL							
2005							
September	19 616	34 928	1 374	14 877	14 544	2 848	88 187
December	20 621	38 183	1 257	17 409	14 364	2 402	94 236
2006							
March	21 605	38 995	1 224	19 052	13 910	2 445	97 232
June	22 921	41 343	1 602	18 298	15 262	2 756	102 183
September	22 375	42 470	1 222	15 910	11 318	2 768	96 061
December	22 800	49 030	1 437	17 891	10 733	2 385	104 276
SEASONALLY ADJUSTED							
2005							
September	21 822	36 638	1 290	19 176	15 562	2 708	95 332
December	20 119	35 998	1 342	17 312	13 919	2 613	92 213
2006							
March	20 616	39 210	1 383	16 887	14 307	2 593	95 328
June	22 285	41 660	1 433	16 781	14 375	2 536	98 854
September	24 877	44 613	1 155	20 513	12 079	2 632	103 825
December	22 285	46 216	1 529	17 792	10 459	2 596	102 210
TREND							
2005							
September	21 379	36 389	1 327	19 053	14 366	2 671	94 975
December	20 723	36 994	1 357	17 665	14 713	2 655	94 217
2006							
March	21 084	38 893	1 359	17 059	14 452	2 588	95 402
June	22 382	41 737	1 346	17 769	13 563	2 577	99 005
September	23 345	44 301	1 348	18 572	12 341	2 592	101 958
December	23 527	45 773	1 385	18 911	11 054	2 606	103 167

(a) For more information refer to paragraphs 4 to 7 of the Explanatory Notes.

RED MEAT PRODUCED(a), Pig meat: All Series

<i>Quarter</i>	<i>New South Wales</i>	<i>Victoria</i>	<i>Queensland</i>	<i>South Australia</i>	<i>Western Australia</i>	<i>Tasmania</i>	<i>Australia</i>
	tonnes	tonnes	tonnes	tonnes	tonnes	tonnes	tonnes
ORIGINAL							
2005							
September	31 385	13 653	24 163	19 178	10 667	600	99 727
December	29 278	13 585	23 529	18 805	9 709	628	95 607
2006							
March	25 851	14 165	23 302	18 093	10 027	570	92 078
June	29 394	15 612	24 634	20 587	10 575	576	101 451
September	27 765	15 304	24 035	19 469	9 115	621	96 384
December	26 827	14 246	22 144	19 277	9 558	635	92 769
SEASONALLY ADJUSTED							
2005							
September	30 768	13 404	23 436	19 277	10 468	589	98 034
December	29 974	14 012	24 204	19 993	10 374	586	98 374
2006							
March	27 455	14 715	24 509	18 253	10 125	603	96 303
June	27 710	14 862	23 546	19 204	10 025	598	96 186
September	27 187	15 029	23 316	19 568	8 947	610	94 767
December	27 481	14 738	22 784	20 420	10 212	592	95 409
TREND							
2005							
September	30 360	13 894	23 880	18 592	10 558	598	97 741
December	29 508	13 986	24 060	19 275	10 388	594	97 700
2006							
March	28 293	14 501	24 139	19 169	10 073	595	96 925
June	27 514	14 863	23 793	19 102	9 775	602	95 892
September	27 306	14 926	23 265	19 599	9 628	602	95 290
December	27 378	14 876	22 845	20 246	9 676	599	95 063

(a) For more information refer to paragraphs 4 to 7 of the Explanatory Notes.

TOTAL RED MEAT PRODUCED(a): All Series

Quarter	New South Wales	Victoria	Queensland	South Australia	Western Australia	Tasmania	Australia
	tonnes	tonnes	tonnes	tonnes	tonnes	tonnes	tonnes
ORIGINAL							
2005							
September	161 901	143 467	314 073	53 948	61 256	16 954	751 988
December	174 267	160 392	271 856	67 113	67 449	17 453	758 896
2006							
March	180 908	162 469	274 872	69 975	65 853	19 939	774 381
June	186 881	156 022	316 578	63 058	64 005	19 389	806 297
September	177 193	158 156	336 332	60 159	60 171	17 290	809 655
December	193 977	192 627	302 638	72 430	66 529	21 275	849 833
SEASONALLY ADJUSTED							
2005							
September	170 388	152 591	283 023	63 170	65 457	19 559	756 253
December	172 291	153 509	282 292	64 650	63 058	17 877	755 329
2006							
March	177 806	158 721	319 068	64 799	63 180	18 043	792 865
June	182 767	157 860	297 188	61 230	67 526	18 549	787 668
September	187 485	168 402	302 769	70 934	64 654	19 998	815 531
December	191 343	184 174	314 661	69 163	62 002	21 636	844 973
TREND							
2005							
September	175 303	156 793	289 157	65 117	64 951	18 799	771 620
December	173 387	154 731	293 344	63 985	64 041	18 388	766 746
2006							
March	176 511	155 205	300 193	63 557	64 519	18 080	775 584
June	182 635	161 535	304 989	65 184	65 165	18 776	797 189
September	187 323	169 929	306 525	67 499	64 724	20 018	817 223
December	190 808	178 172	307 672	69 810	63 501	21 141	834 680

(a) For more information refer to paragraphs 4 to 7 of the Explanatory Notes.

CHICKEN MEAT PRODUCED(a): All Series

<i>Quarter</i>	<i>New South Wales</i>	<i>Victoria</i>	<i>Queensland</i>	<i>South Australia</i>	<i>Western Australia</i>	<i>Australia</i>
tonnes	tonnes	tonnes	tonnes	tonnes	tonnes	tonnes

ORIGINAL

2005						
September	68 926	50 901	36 896	np	np	188 782
December	68 920	54 125	34 239	np	np	190 998
2006						
March	73 117	54 226	35 531	np	np	196 658
June	74 330	56 196	28 983	np	np	196 175
September	68 809	60 927	33 565	np	np	198 358
December	73 668	58 997	35 030	np	np	206 225

SEASONALLY ADJUSTED

2005						
September	69 201	52 335	36 404	np	np	189 844
December	67 724	52 232	32 202	np	np	185 595
2006						
March	74 588	54 225	36 787	np	np	199 450
June	73 784	56 691	30 327	np	np	197 865
September	69 236	62 634	33 078	np	np	199 792
December	72 289	56 976	32 874	np	np	200 441

TREND

2005						
September	69 234	54 043	34 624	np	np	190 921
December	71 126	52 710	34 702	np	np	191 923
2006						
March	71 980	54 330	33 731	np	np	194 317
June	72 559	57 459	32 861	np	np	198 425
September	71 852	59 249	32 492	np	np	200 074
December	70 769	59 757	32 174	np	np	200 058

np not available for publication but included in totals where applicable, unless otherwise indicated

(a) For more information refer to paragraphs 8 and 9 of the Explanatory Notes.

MEAT PRODUCED(a): Original

<i>Financial year</i>	<i>New South Wales</i> tonnes	<i>Victoria</i> tonnes	<i>Queensland</i> tonnes	<i>South Australia</i> tonnes	<i>Western Australia</i> tonnes	<i>Tasmania</i> tonnes	<i>Australia</i> tonnes
BEEF							
2003-04	401 926	361 323	974 715	86 755	116 555	55 454	1 997 848
2004-05	440 720	363 226	1 046 410	93 049	131 407	56 859	2 132 810
2005-06	411 202	331 311	1 054 198	83 547	113 318	54 807	2 049 521
VEAL							
2003-04	14 277	15 076	4 253	234	258	947	35 093
2004-05	12 941	11 393	3 451	176	250	886	29 147
2005-06	13 288	10 011	2 994	149	250	809	27 551
MUTTON							
2003-04	73 335	60 055	19 021	23 369	37 094	6 839	219 713
2004-05	77 517	68 026	18 899	22 721	43 842	6 351	237 356
2005-06	78 795	70 562	19 102	24 098	45 939	5 294	243 791
LAMB							
2003-04	82 149	130 772	5 127	67 753	47 212	8 436	341 448
2004-05	82 550	135 948	5 564	72 157	49 122	8 950	354 290
2005-06	84 763	153 449	5 457	69 636	58 080	10 452	381 837
PIG MEAT							
2003-04	129 800	70 289	99 774	57 960	45 190	2 457	405 898
2004-05	119 085	62 740	96 365	63 525	43 999	2 538	388 598
2005-06	115 908	57 015	95 628	76 663	40 977	2 374	388 863
TOTAL RED MEAT							
2003-04	701 486	637 515	1 102 890	236 071	246 309	74 134	3 000 002
2004-05	732 812	641 332	1 170 689	251 627	268 620	75 584	3 142 201
2005-06	703 956	622 349	1 177 380	254 093	258 563	73 735	3 091 562
CHICKEN MEAT							
2003-04	247 755	205 348	117 889	np	np	np	693 602
2004-05	265 716	219 508	128 669	np	np	np	750 029
2005-06	285 294	215 448	135 650	np	np	np	772 613

np not available for publication but included in totals where applicable, unless otherwise indicated

(a) For more information refer to paragraphs 4 to 9 in the Explanatory Notes.

EXPORTS OF FRESH, FROZEN AND PROCESSED MEAT, Australia(a): Original

Period	FRESH, CHILLED OR FROZEN MEAT									PROCESSED MEAT	
	<i>Beef bone-in</i>	<i>Beef bone-out</i>	<i>Veal bone-in</i>	<i>Veal bone-out</i>	<i>Mutton bone-in</i>	<i>Mutton bone-out</i>	<i>Lamb bone-in</i>	<i>Lamb bone-out</i>	<i>Pork</i>	<i>Bacon and ham</i>	<i>Canned meat</i>
	tonnes	tonnes	tonnes	tonnes	tonnes	tonnes	tonnes	tonnes	tonnes	tonnes	tonnes
2003-04	32 069	852 412	2 893	6 262	86 539	42 722	100 537	18 326	50 667	558	24 705
2004-05	44 636	959 391	3 320	5 775	101 740	41 790	106 518	21 699	43 495	449	22 835
2005-06	52 196	890 604	3 266	5 793	106 948	41 458	119 523	26 491	44 007	292	20 857
2005											
September	14 627	227 460	1 029	2 110	18 616	7 986	27 520	6 319	10 528	105	5 734
December	13 801	229 711	817	1 511	32 003	12 989	32 893	6 308	10 117	90	5 474
2006											
March	11 398	195 170	642	612	29 950	10 105	26 423	6 181	11 030	38	4 388
June	12 370	238 262	778	1 560	26 379	10 379	32 688	7 682	12 331	59	5 261
September	14 124	247 189	938	1 943	24 018	9 464	30 875	6 377	10 976	125	5 311
December	15 092	268 605	950	1 990	44 167	13 156	35 732	7 170	10 516	145	4 993

(a) For more information refer to paragraphs 10 and 11 of the Explanatory Notes.

EXPORTS OF LIVE SHEEP AND CATTLE, Australia(a): Original

<i>Period</i>	<i>Number</i>	<i>Gross weight</i>	<i>Gross value</i>	<i>Unit value</i>
	'000	'000 tonnes	\$'000	\$
.....				
SHEEP				
2003-04	3 842.7	188.2	266 457	69.34
2004-05	3 233.2	166.1	206 678	63.92
2005-06	4 247.7	209.5	291 452	68.61
2005				
September	1 173.7	60.0	82 397	70.20
December	1 465.8	72.1	101 472	69.22
2006				
March	865.7	44.3	56 812	65.63
June	742.4	33.0	50 771	68.38
September	1 166.3	56.9	83 620	71.70
December	1 388.7	63.5	97 768	70.40
.....				
CATTLE				
2003-04	581.5	192.0	317 850	546.65
2004-05	573.7	191.7	374 060	652.01
2005-06	548.8	182.7	357 793	651.99
2005				
September	157.6	55.7	96 100	609.81
December	102.8	33.4	73 944	719.55
2006				
March	107.0	34.9	72 861	680.63
June	181.4	58.7	114 888	633.45
September	187.4	60.8	126 847	676.70
December	136.1	45.7	94 241	692.44

(a) For more information refer to paragraph 12 of the Explanatory Notes.

WHOLE MILK INTAKE, By Factories(a)(b): All Series

	<i>New South Wales</i>	<i>Victoria</i>	<i>Queensland</i>	<i>South Australia</i>	<i>Western Australia</i>	<i>Tasmania</i>	Australia
<i>Quarter</i>	ML	ML	ML	ML	ML	ML	ML
ORIGINAL							
2005							
June	274	1 147	142	149	96	101	1 909
September	309	1 556	168	149	103	103	2 388
December	353	2 310	168	206	109	235	3 382
2006							
March	288	1 546	142	166	82	173	2 396
June	268	1 171	132	160	86	111	1 927
September	313	1 654	154	175	93	116	2 504
SEASONALLY ADJUSTED							
2005							
June	308	1 731	155	170	101	155	2 620
September	303	1 644	158	158	99	155	2 517
December	309	1 601	157	171	99	148	2 485
2006							
March	304	1 634	149	173	90	157	2 507
June	301	1 762	144	178	90	172	2 647
September	306	1 747	144	186	90	174	2 647
TREND							
2005							
June	306	1 695	155	169	100	153	2 578
September	306	1 655	157	170	99	152	2 539
December	306	1 625	155	171	97	153	2 507
2006							
March	304	1 658	150	174	93	159	2 538
June	304	1 716	146	179	90	167	2 602
September	303	1 763	143	184	89	174	2 656

(a) For more information refer to paragraph 13 of the Explanatory Notes.

(b) Data for Australian Capital Territory are included in New South Wales; data for Northern Territory are included in South Australia.

Source: Original series data from Dairy Australia.

MARKET MILK SALES, By Factories(a)(b): All Series

	New South Wales	Victoria	Queensland	South Australia	Western Australia	Tasmania	Australia
Quarter	ML	ML	ML	ML	ML	ML	ML
ORIGINAL							
2005							
June	164	122	109	49	54	13	512
September	167	125	112	50	55	13	522
December	161	122	110	49	54	13	508
2006							
March	162	121	111	49	54	14	511
June	167	127	112	50	56	14	526
September	173	129	120	53	59	14	547
SEASONALLY ADJUSTED							
2005							
June	163	121	109	50	54	13	510
September	163	122	109	49	54	13	511
December	162	122	110	49	54	13	511
2006							
March	164	124	112	50	55	14	518
June	166	127	113	51	56	14	526
September	169	127	117	51	58	14	535
TREND							
2005							
June	163	121	109	49	54	13	509
September	163	122	110	49	54	13	510
December	163	123	110	49	54	13	513
2006							
March	164	124	112	50	55	13	518
June	166	126	114	50	56	14	526
September	168	127	116	51	57	14	533

(a) For more information refer to paragraph 13 of the Explanatory Notes.

(b) Data for Australian Capital Territory are included in New South Wales; data for Northern Territory are included in South Australia.

Source: Original series data from Dairy Australia.

BROKERS AND DEALERS RECEIVALS OF TAXABLE WOOL(a): All Series

Quarter	New South Wales	Victoria	Queensland	South Australia	Western Australia	Tasmania	Australia	% of total received by brokers
	tonnes	tonnes	tonnes	tonnes	tonnes	tonnes	tonnes	%
ORIGINAL								
2005								
September	42 735	29 417	7 562	17 387	28 538	3 682	129 320	79.7
December	41 196	36 097	4 655	18 460	31 371	3 875	135 655	79.5
2006								
March	35 337	30 607	3 642	13 973	38 810	2 205	124 574	79.4
June	33 959	23 261	5 157	12 120	20 083	2 598	97 177	75.4
September	38 527	29 009	6 492	17 892	27 695	3 545	123 159	80.2
December	37 574	38 146	3 452	20 110	29 061	3 608	131 950	78.0
SEASONALLY ADJUSTED								
2005								
September	36 890	29 554	5 487	15 039	28 131	3 435	118 536	..
December	36 767	28 011	5 841	14 978	28 863	2 878	117 337	..
2006								
March	39 908	32 183	4 718	15 569	31 493	2 943	126 815	..
June	40 287	30 201	4 952	17 126	29 438	3 069	125 073	..
September	33 513	29 223	4 682	15 392	27 380	3 293	113 483	..
December	33 543	29 753	4 318	16 421	26 840	2 742	113 617	..
TREND								
2005								
September	36 903	30 738	5 522	16 019	28 221	3 223	120 627	..
December	38 205	29 994	5 476	15 421	29 564	3 063	121 723	..
2006								
March	39 050	30 064	5 139	15 576	30 204	3 002	123 036	..
June	38 117	30 388	4 833	16 150	29 435	3 056	121 979	..
September	35 754	29 908	4 604	16 227	28 017	3 068	117 578	..
December	33 444	29 291	4 470	16 153	26 785	2 979	113 123	..

.. not applicable

(a) For more information refer to paragraphs 4, 14 and 15 of the Explanatory Notes.

<i>Financial year</i>	<i>New South Wales</i>	<i>Victoria</i>	<i>Queensland</i>	<i>South Australia</i>	<i>Western Australia</i>	<i>Tasmania</i>	<i>Australia</i>
-----------------------	------------------------	-----------------	-------------------	------------------------	--------------------------	-----------------	-------------------------

.....

WHOLE MILK INTAKE BY FACTORIES (b) (ML)

2003-04	1 271	6 434	674	703	403	590	10 075
2004-05	1 218	6 613	619	679	396	600	10 125
2005-06	1 217	6 583	609	680	380	622	10 092

.....

MARKET MILK SALES BY FACTORIES (b) (ML)

2003-04	628	484	411	196	204	52	1 976
2004-05	641	480	429	199	215	53	2 017
2005-06	656	495	445	198	219	53	2 066

.....

BROKERS AND DEALERS RECEIVALS OF TAXABLE WOOL (Tonnes)

2003-04	140 815	119 667	17 127	66 982	109 853	13 138	467 582
2004-05	149 193	120 360	20 217	67 516	107 054	10 881	475 221
2005-06	153 227	119 383	21 016	61 939	118 801	12 360	486 726

.....

(a) For more information refer to paragraphs 13 to 15 of the Explanatory Notes.

(b) Data for Australian Capital Territory are included in New South Wales; data for Northern Territory are included in South Australia.

Source: Original series milk data from Dairy Australia.

WHAT IF...? REVISIONS TO TREND ESTIMATES

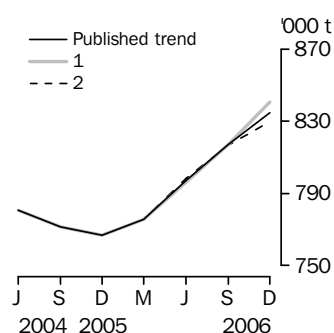
EFFECT OF NEW SEASONALLY ADJUSTED ESTIMATES ON TREND ESTIMATES

TREND REVISIONS

Recent seasonally adjusted and trend estimates are likely to be revised when original estimates for subsequent quarters become available. The approximate effects of possible scenarios on trend estimates are presented below. These illustrate the impact on trend estimates if next quarter's seasonally adjusted estimate either rises or falls by a certain percentage (based on the historical average of movements in seasonally adjusted estimates).

For further information, see paragraphs 20 to 22 of the Explanatory Notes.

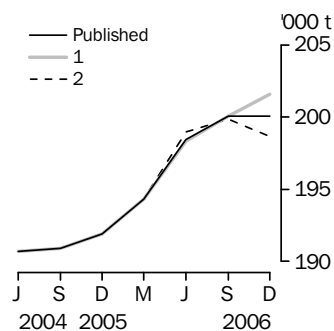
RED MEAT PRODUCTION



WHAT IF NEXT QUARTER'S SEASONALLY ADJUSTED ESTIMATE:

	<u>Trend as published</u>		<u>(1) rises by 2.2% on Dec Qtr 2006...</u>		<u>(2) falls by 2.2% on Dec Qtr 2006...</u>	
	number	% change	number	% change	number	% change
Dec Qtr 2005	766 746	-0.6	766 747	-0.6	766 747	-0.6
Mar Qtr 2006	775 584	1.2	775 584	1.2	775 584	1.2
Jun Qtr 2006	797 189	2.8	796 232	2.7	798 416	2.9
Sep Qtr 2006	817 223	2.5	817 345	2.7	816 550	2.3
Dec Qtr 2006	834 680	2.1	840 432	2.8	829 904	1.6

CHICKEN MEAT PRODUCTION

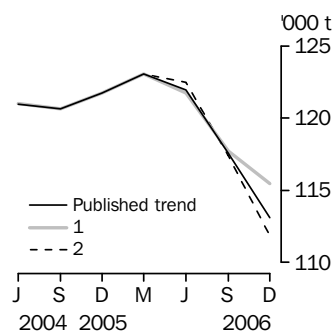


WHAT IF NEXT QUARTER'S SEASONALLY ADJUSTED ESTIMATE:

	<u>Trend as published</u>		<u>(1) rises by 2.6% on Dec Qtr 2006...</u>		<u>(2) falls by 2.6% on Dec Qtr 2006...</u>	
	number	% change	number	% change	number	% change
Dec Qtr 2005	191 923	0.5	191 923	0.5	191 923	0.5
Mar Qtr 2006	194 317	1.2	194 317	1.2	194 317	1.2
Jun Qtr 2006	198 425	2.1	198 341	2.1	198 953	2.4
Sep Qtr 2006	200 074	0.8	200 092	0.9	199 869	0.5
Dec Qtr 2006	200 058	—	201 609	0.8	198 658	-0.6

— nil or rounded to zero (including null cells)

WOOL RECEIVALS

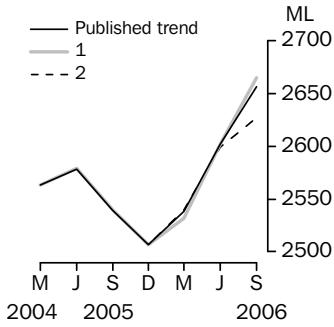


WHAT IF NEXT QUARTER'S SEASONALLY ADJUSTED ESTIMATE:

	<u>Trend as published</u>		<u>(1) rises by 5.6% on Dec Qtr 2006...</u>		<u>(2) falls by 5.6% on Dec Qtr 2006...</u>	
	number	% change	number	% change	number	% change
Dec Qtr 2005	121 723	0.9	121 723	0.9	121 723	0.9
Mar Qtr 2006	123 036	1.1	123 036	1.1	123 036	1.1
Jun Qtr 2006	121 979	-0.9	121 736	-1.1	122 484	-0.4
Sep Qtr 2006	117 578	-3.6	117 707	-3.3	117 401	-4.1
Dec Qtr 2006	113 123	-3.8	115 456	-1.9	111 833	-4.7

WHAT IF...? REVISIONS TO TREND ESTIMATES *continued*

WHOLE MILK INTAKE BY FACTORIES



WHAT IF NEXT QUARTER'S

SEASONALLY ADJUSTED ESTIMATE:

	<i>Trend as published</i>		<i>(1) rises by 2.5% on Sep Qtr 2006</i>		<i>(2) falls by 2.5% on Sep Qtr 2006</i>	
	number	% change	number	% change	number	% change
Sep Qtr 2005	2 539	-1.5	2 540	-1.5	2 540	-1.5
Dec Qtr 2005	2 507	-1.3	2 507	-1.3	2 507	-1.3
Mar Qtr 2006	2 538	1.2	2 532	1.0	2 540	1.3
Jun Qtr 2006	2 602	2.5	2 602	2.8	2 599	2.3
Sep Qtr 2006	2 656	2.1	2 665	2.4	2 627	1.1

EXPLANATORY NOTES

INTRODUCTION

1 This publication contains information on livestock slaughterings, meat production, exports of live sheep and live cattle, exports of fresh, frozen and processed meat, and whole milk intake by factories, market milk sales by factories and receivals of taxable wool by wool brokers and dealers.

2 The figures shown in this publication have been revised where necessary and as a consequence may not agree with similar data shown in previous publications.

3 Where figures have been rounded, discrepancies may occur between sums of the component items and totals.

4 Unless indicated otherwise, Australian totals include data for all states and both territories.

LIVESTOCK SLAUGHTERINGS AND MEAT PRODUCTION

5 The statistics on slaughterings for red meat production are based on a monthly collection from abattoirs and other major slaughtering establishments and include estimates of animals slaughtered on farms and by country butchers and other small slaughtering establishments.

6 Red meat is shown in carcass weight and excludes offal.

7 Care should be taken when using this information as the figures only relate to slaughterings for human consumption and do not include animals condemned, slaughtered for pet food or those killed for boiling down.

8 Poultry slaughterings and meat produced statistics have been compiled from quarterly returns supplied by commercial poultry slaughtering establishments and comprise boilers, fryers and roasters. Many small producers are excluded from the collection; however, the statistics represent a high level of coverage. Tasmanian, Northern Territory and Australian Capital Territory data are excluded from the Australian total.

9 Chicken meat is shown in dressed weight of whole birds, pieces and giblets. Some slaughterings and meat production statistics for 'Ducks and Drakes' and 'Other Fowls and Turkeys' are available by contacting the ABS on Hobart (03) 6222 5838 or by writing to GPO Box 66, Hobart Tasmania 7001 (Attention: Agriculture Section).

EXPORTS OF FRESH, FROZEN AND PROCESSED MEAT

10 Table 20 shows exports of fresh, frozen and processed meat. International trade statistics are compiled by the ABS from information submitted by exporters and importers or their agents to the Australian Customs Service. Factors can be applied to beef, veal, mutton and lamb bone-out figures to derive bone-in carcass weight which, when added to bone-in figures, shows total exports in carcass weight. The factor for beef and veal is 1.5 and for mutton and lamb, 2.0. This information is sourced from Department of Agriculture, Fisheries and Forestry – Australia.

11 Beef also includes buffalo meat. Bacon and ham shown is the cured carcass weight of smoked or cooked bacon and ham. It also includes the stated net weight of packs of canned bacon and ham. Canned meat is shown as the canned weight and excludes canned bacon and ham.

LIVE SHEEP AND CATTLE EXPORTS

12 Table 21 contains statistics of the number of live sheep and cattle exported, the gross weight, gross value and unit value. The unit value is obtained by dividing the gross value by the number of animals exported. Sheep and cattle exported for breeding are excluded.

MILK

13 Tables 2, 22, 23 and 25 contain statistics collected by Dairy Australia. Whole milk intake by factories includes the whole milk equivalent of farm cream intake. Market milk sales includes white, flavoured, high and low fat milk and UHT milk. Interstate transfers of UHT milk have been included in their state of destination.

EXPLANATORY NOTES *continued*

WOOL RECEIVALS

14 The statistics in tables 2, 24 and 25 show the amount of taxable wool received by brokers and purchased by dealers from wool producers. It excludes wool received by brokers on which tax has already been paid by other dealers (private buyers) or brokers.

15 The information shown is on the basis of the state in which wool has actually been received and does not necessarily reflect the production of wool in that state.

SEASONAL ADJUSTMENT

16 Seasonal adjustment is a means of removing the estimated effects of normal seasonal variation from the series so that the effects of other influences can be more clearly recognised.

17 In the seasonal adjustment of the livestock estimates, account has been taken of both normal seasonal factors and 'trading day' effects, where significant, (arising from the varying length of each quarter and the varying numbers of Sundays, Mondays, Tuesdays etc. in the quarter). Adjustments are also made for the effects of change in the date of Easter holidays, again, where significant. Seasonal adjustment does not remove from the series the effect of irregular influences (e.g. abnormal weather, industrial disputes).

18 The state component series have been seasonally adjusted independently. Therefore, the adjusted components may not add to the Australian group totals.

19 In this publication the seasonally adjusted estimates are produced by the concurrent seasonal adjustment method which takes account of the latest available original estimates. This method improves the estimation of seasonal factors and therefore, the seasonally adjusted and trend estimates for the current and previous quarters. As a result of this improvement, revisions to the seasonally adjusted and trend estimates will be observed for recent periods. In most instances the only noticeable revisions will be to the previous quarter and the same quarter one year ago. A more detailed review is conducted annually prior to the September quarter release, using data up to and including the June quarter. The concurrent seasonal adjustment methodology replaces the forward factor methodology used previously.

TREND ESTIMATES

20 A trend estimate is obtained by reducing the irregular component from the seasonally adjusted series. In this publication trend estimates are generally derived by applying a 7-term Henderson moving average to the seasonally adjusted series. The 7-term Henderson, (like all Henderson averages) is symmetric, but as the end of a time series is approached, asymmetric forms of the average are applied. Unlike the weights of the standard 7-term Henderson moving average, the weights employed here have been tailored to suit the particular characteristics of individual series. While the asymmetric weights enable the trend to be calculated for recent quarters, it does result in revisions to the estimates for the most recent three quarters as additional observations become available. Revisions of trend estimates will also occur with revisions to the original data and re-estimation of seasonal factors.

21 Sensitivity analysis indicates the potential magnitude and direction of revisions created to the last three estimates. It aims to show how a specified movement in the seasonally adjusted data in the next period will affect the trend path of the time series. By showing how sensitive the trend estimates are to the addition of new data, the analysis provides information which can be used in the assessment of the trend's stability.

22 For further information, see *Information Paper: A Guide to Interpreting Time Series – Monitoring 'Trends', an Overview* (cat. no. 1348.0) or contact the Assistant Director, Time Series Analysis on Canberra (02) 6252 6345.

EXPLANATORY NOTES *continued*

RELATED PUBLICATIONS

23 Current publications and other products released by the ABS are listed in the *Catalogue of Publications and Products* (cat. no. 1101.0). The Catalogue is available from any ABS office or the ABS web site <<http://www.abs.gov.au>>. The ABS also issues a daily Release Advice on the web site which details products to be released in the week ahead.

GENERAL ACKNOWLEDGMENT

24 ABS publications draw extensively on information provided freely by individuals, businesses, governments and other organisations. Their continued cooperation is very much appreciated. Without it, the wide range of statistics published by the ABS would not be available. Information received by the ABS is treated in strict confidence as required by the *Census and Statistics Act 1905*.

FOR MORE INFORMATION . . .

- INTERNET* **www.abs.gov.au** the ABS web site is the best place for data from our publications and information about the ABS.
- LIBRARY* A range of ABS publications are available from public and tertiary libraries Australia wide. Contact your nearest library to determine whether it has the ABS statistics you require, or visit our web site for a list of libraries.

INFORMATION AND REFERRAL SERVICE

Our consultants can help you access the full range of information published by the ABS that is available free of charge from our web site, or purchase a hard copy publication. Information tailored to your needs can also be requested as a 'user pays' service. Specialists are on hand to help you with analytical or methodological advice.

- PHONE* 1300 135 070
- EMAIL* client.services@abs.gov.au
- FAX* 1300 135 211
- POST* Client Services, ABS, GPO Box 796, Sydney NSW 2001

FREE ACCESS TO STATISTICS

All statistics on the ABS web site can be downloaded free of charge.

- WEB ADDRESS* www.abs.gov.au



2721500012062

ISSN 0728 4047

RRP \$26.00